



● View of completed model

## Florence Cathedral, Italy

Scale : 1 / 850

The Florence Cathedral is a world heritage listed gothic-style basilica, and is a famous landmark of the historical district of Italy's Florence. Construction of the basilica began in 1296, and took more than 140 years to complete. The Florence Cathedral is composed of three buildings: the "Duomo," which is famous for its huge dome roof and is the fourth-biggest cathedral in the world; the "Baptistry of San Giovanni," an octagonal building famous for the "Gates of Paradise," and "Giotto's Bell Tower," which stands to the side of the Duomo. The white, green, and red marble exterior of the Cathedral is decorated with beautiful sculptures and mosaic works from many different artists.

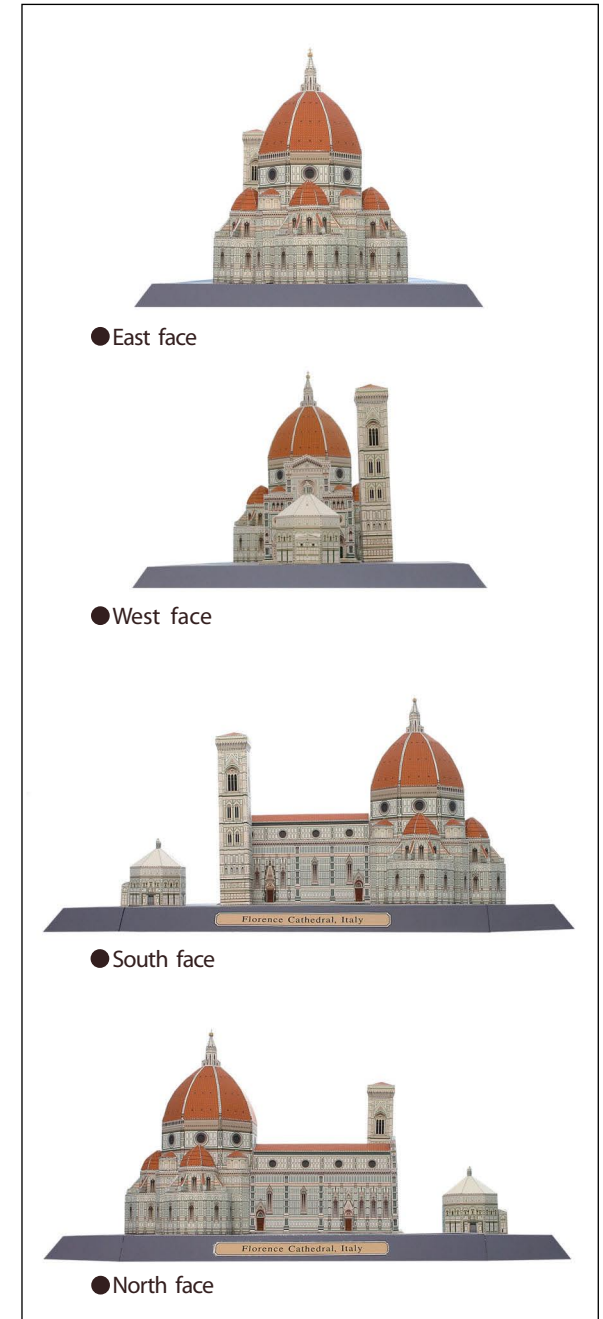
\* This model was designed for Papercraft and may differ from the original in some respects.

■ Parts sheet (Pattern) : Ten A4 sheets

■ No. of Parts : 69 (Including 2 spare parts)

\* Build the model by carefully reading the Assembly Instructions, in the parts sheet page order.

\* Assembly will be easier if you write the part's number on the back of each part.



● East face

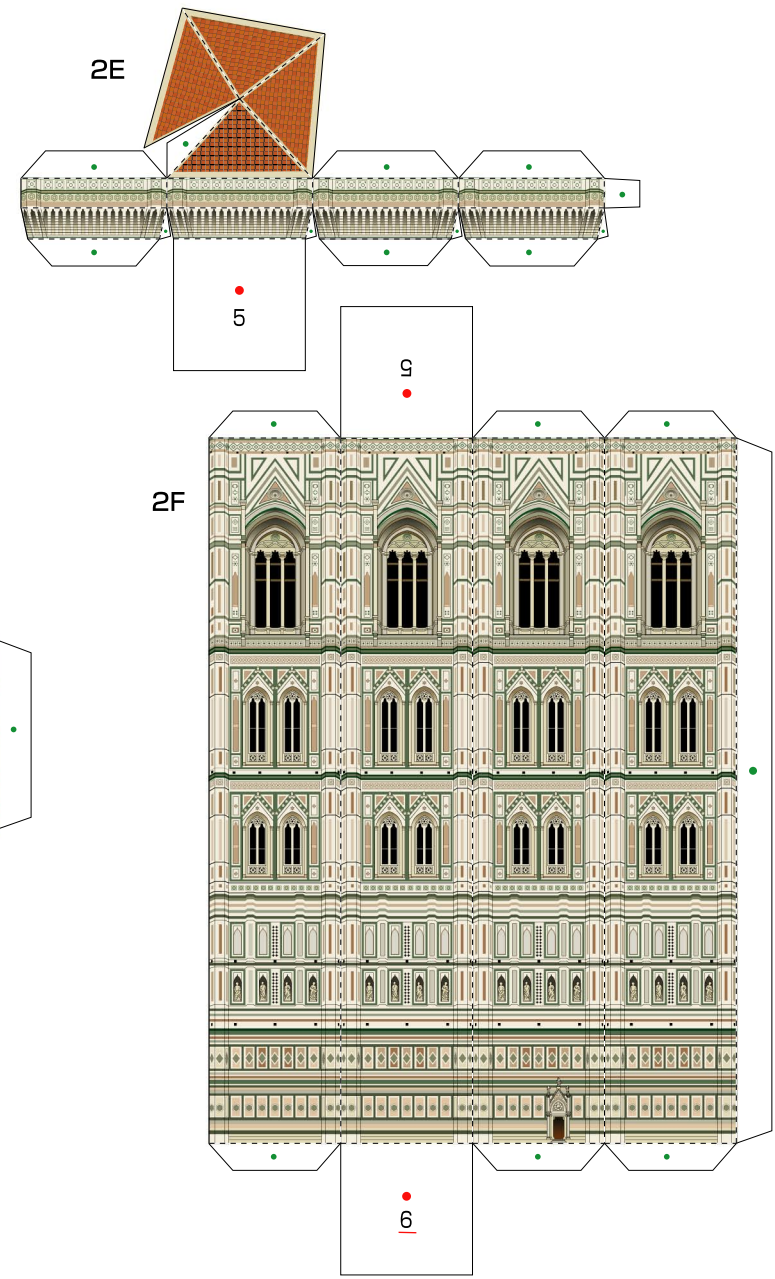
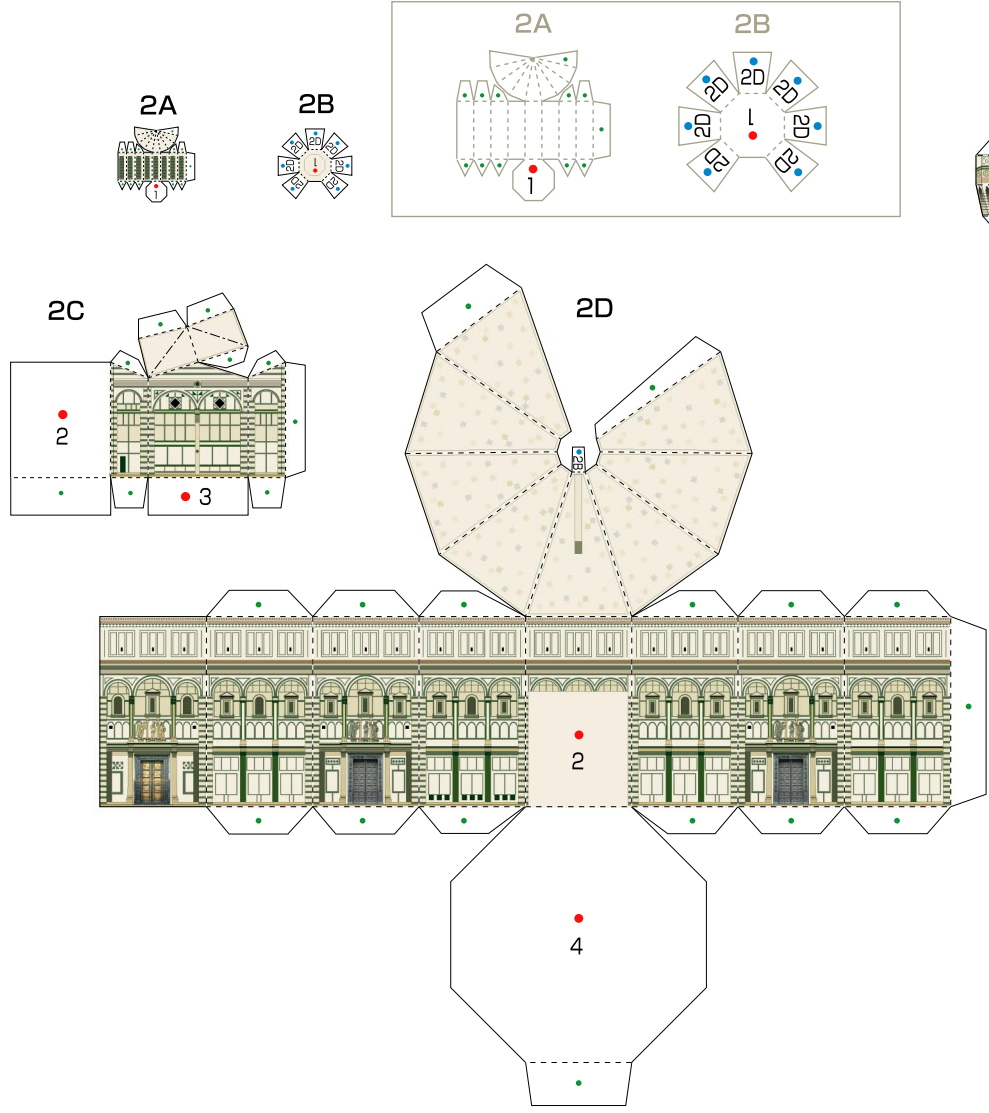
● West face

● South face

● North face

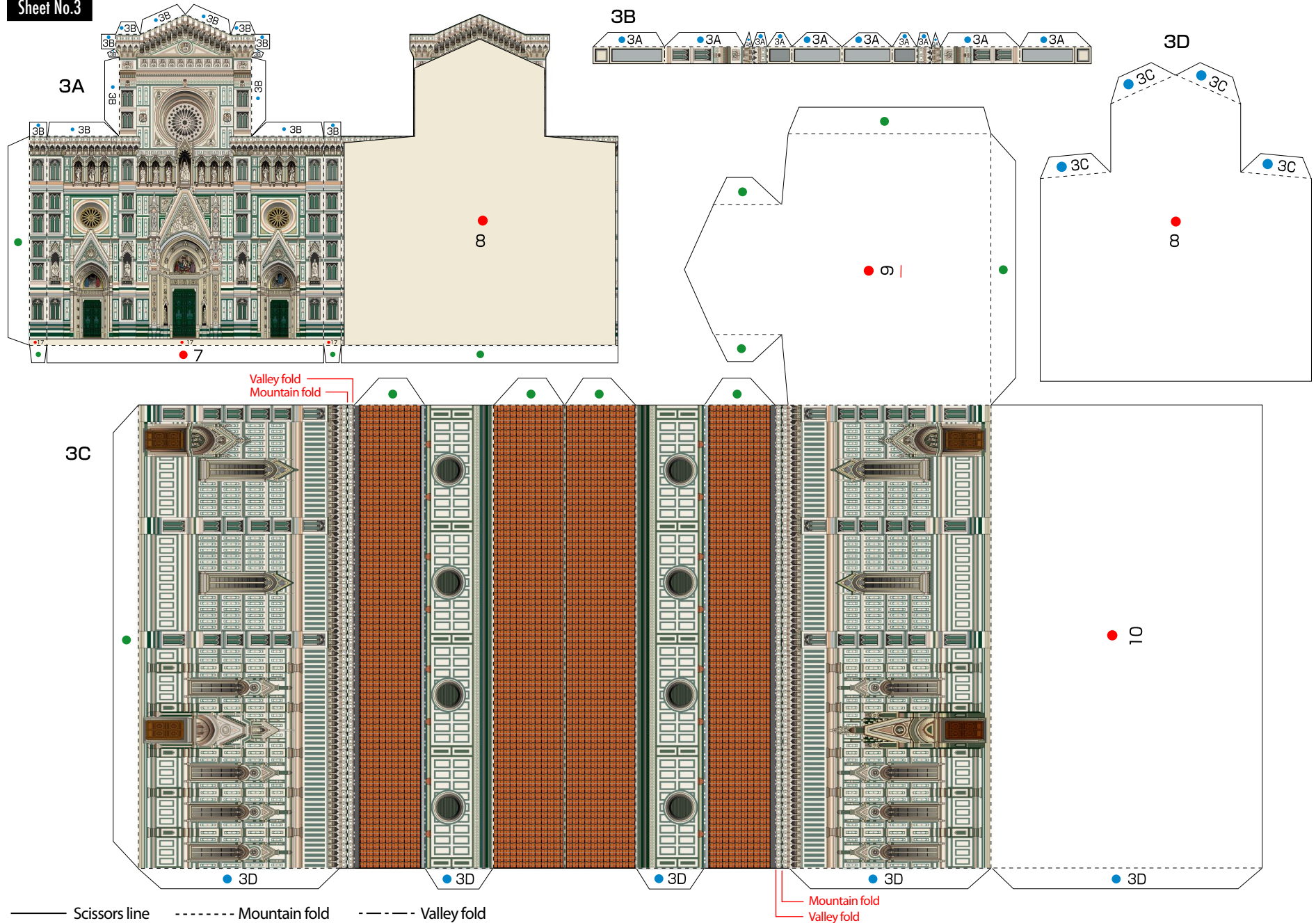
Sheet No.2

● See the diagram below for the parts numbers of 2A and 2B.



—— Scissors line    - - - - - Mountain fold    - · - · - Valley fold

Sheet No.3

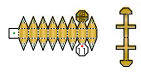




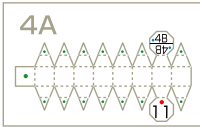
## Sheet No.4

● See the diagram below for the parts numbers of 4A.

4A 4B

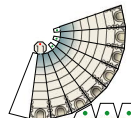
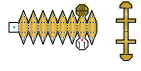


4A

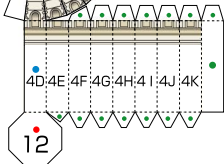


● Spare parts

4A 4B



4C



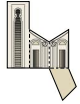
4D

4E



4F

4G



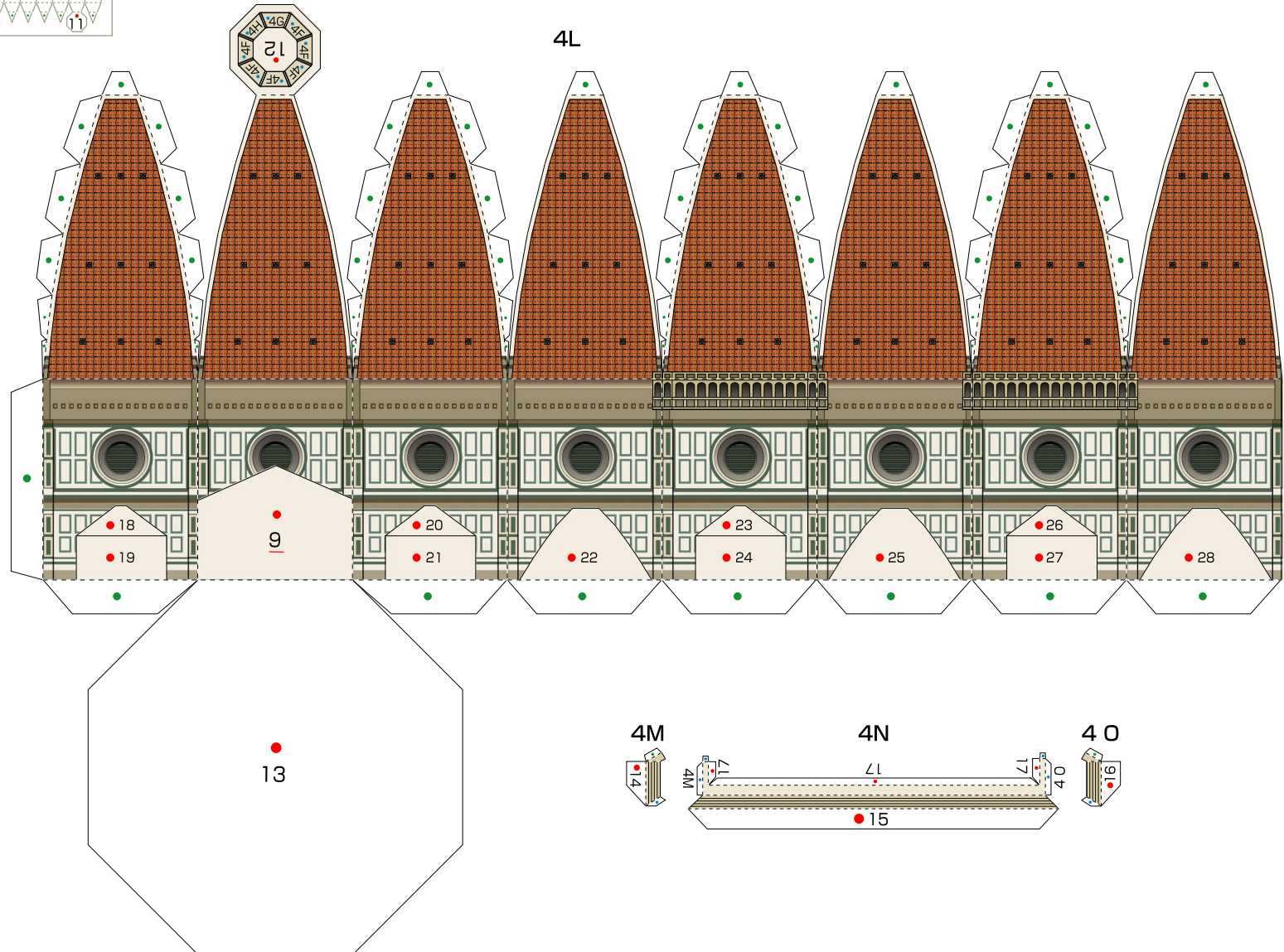
4H

4I



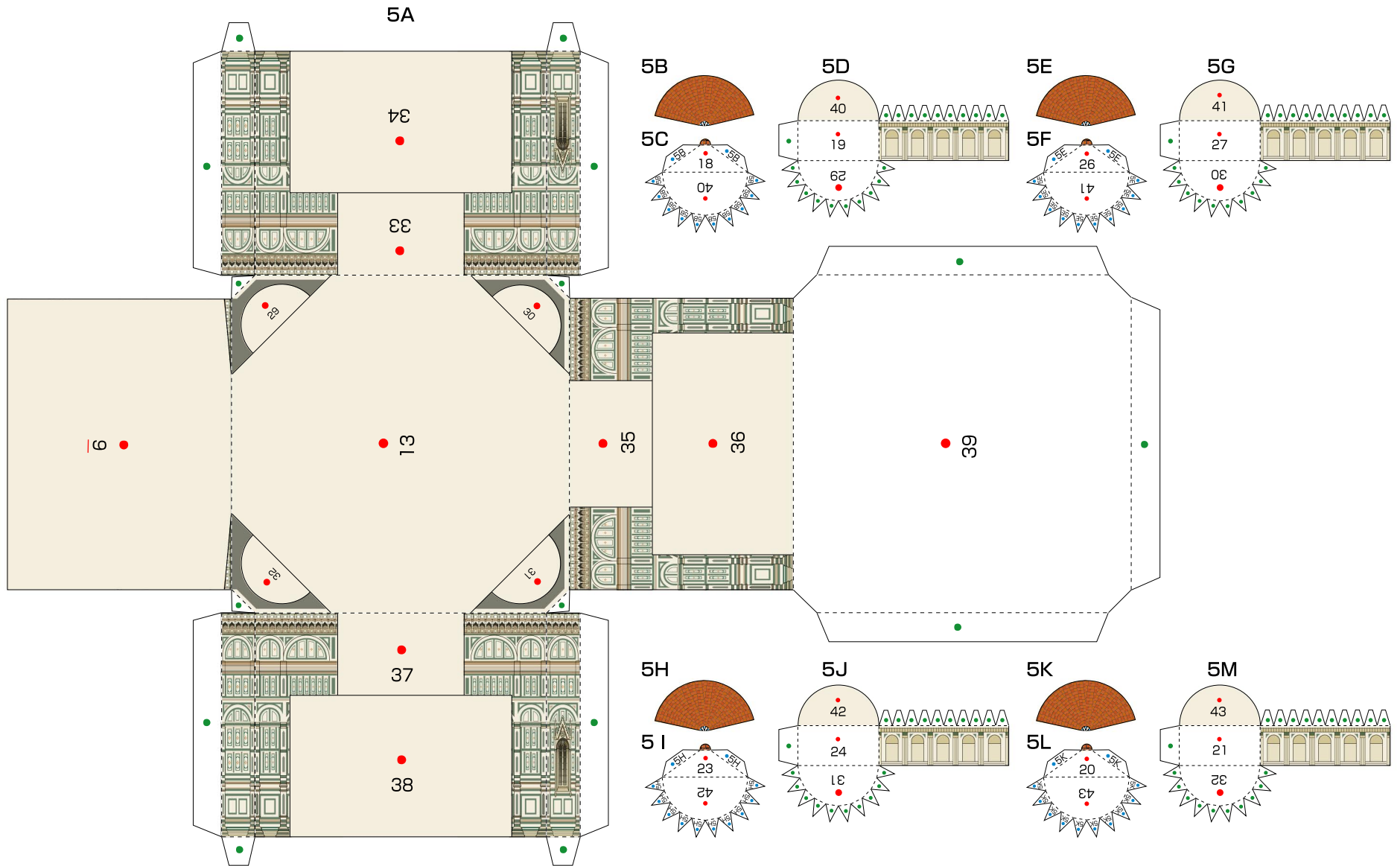
4J

4K



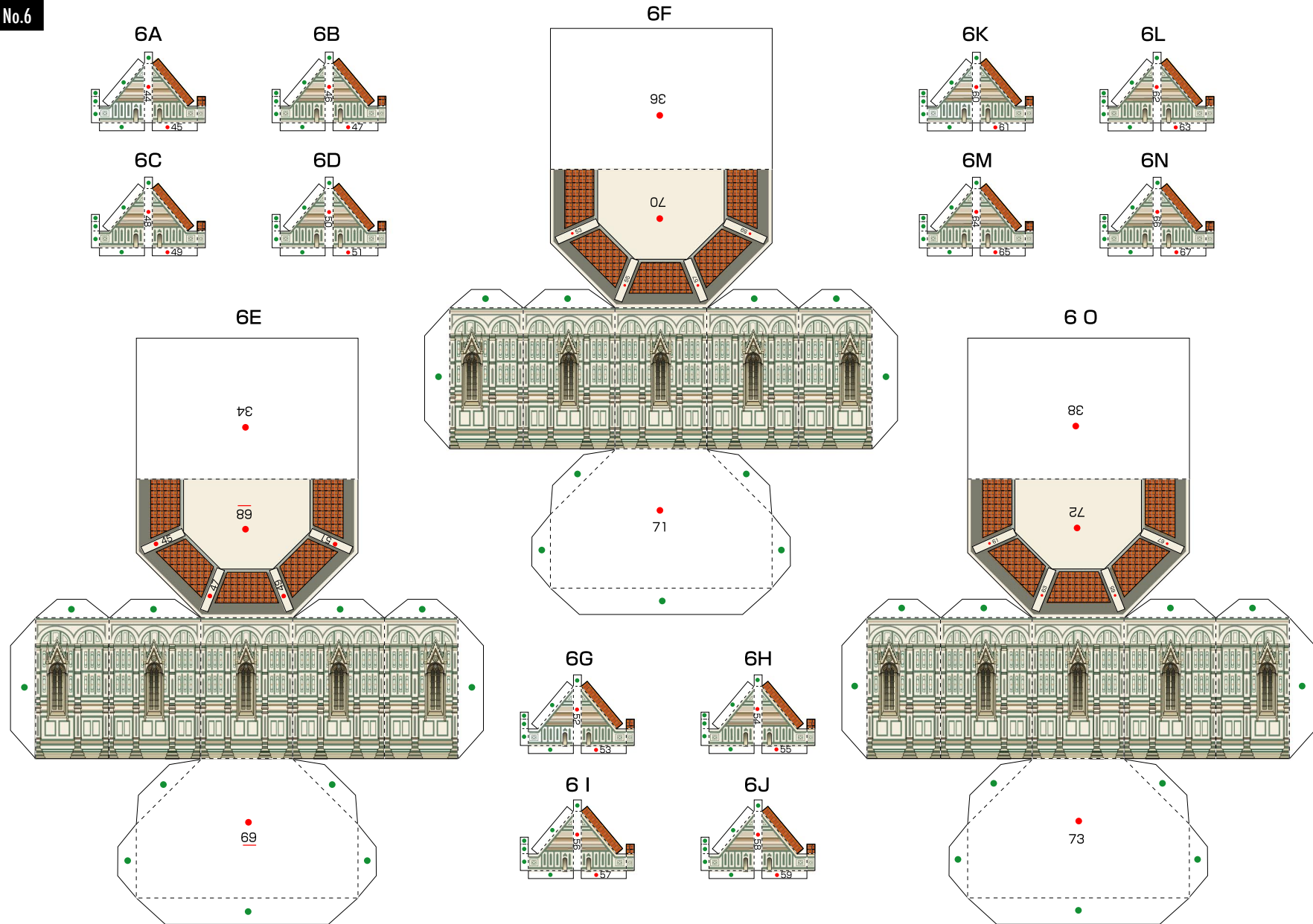
—— Scissors line    - - - - - Mountain fold    - · - - - Valley fold

Sheet No.5



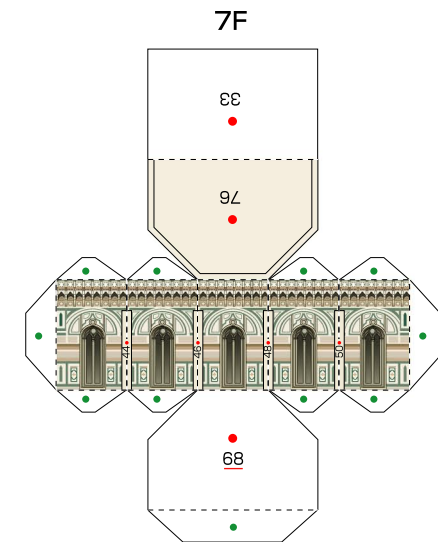
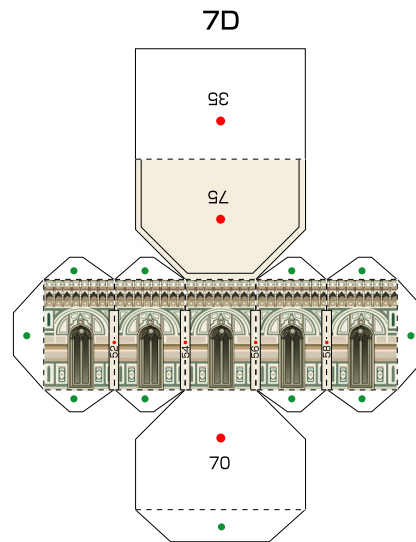
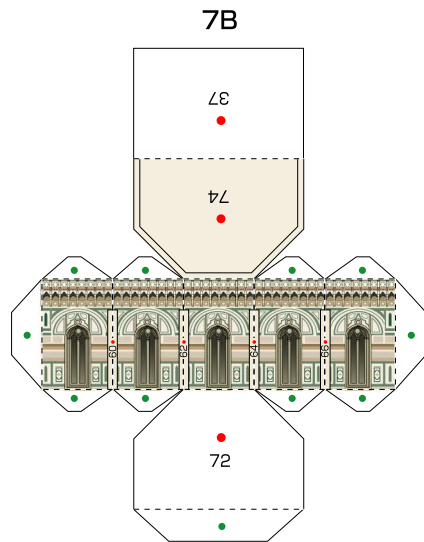
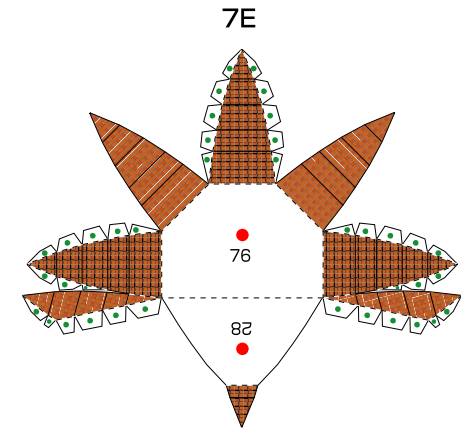
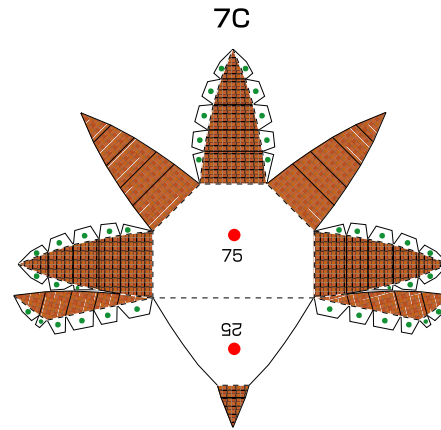
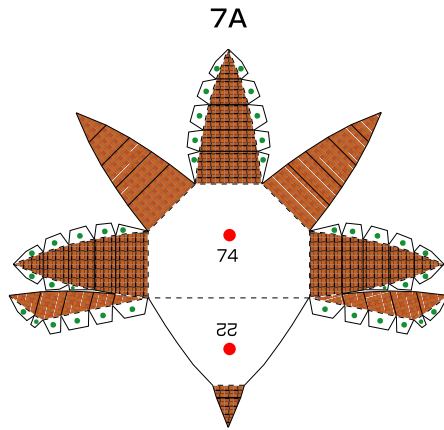
—— Scissors line    - - - - - Mountain fold    - · - - - Valley fold

Sheet No.6



—— Scissors line    - - - - - Mountain fold    - · - · - Valley fold

Sheet No.7

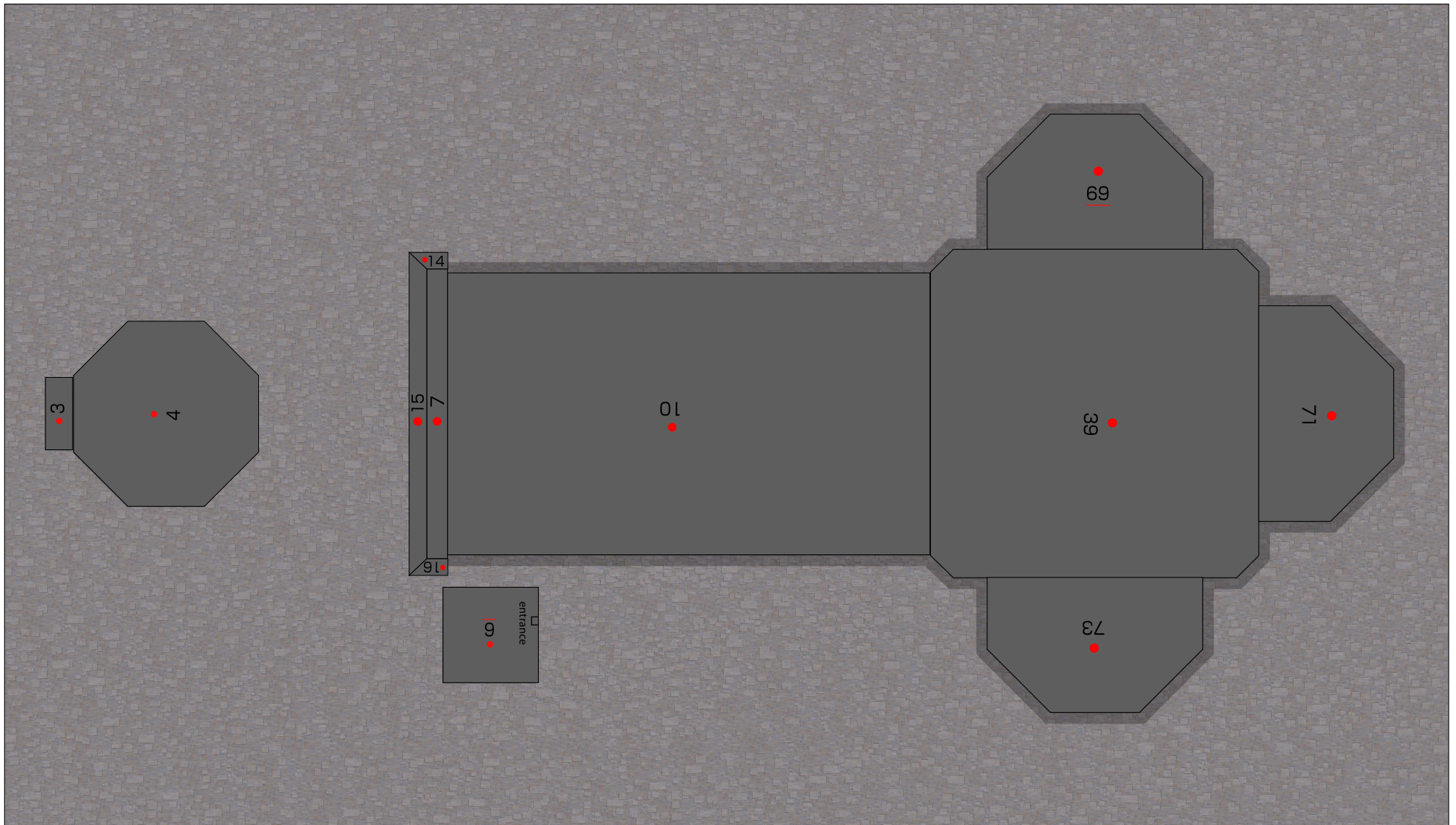


—— Scissors line    - - - - - Mountain fold    - - - - - Valley fold



Sheet No.8

8A

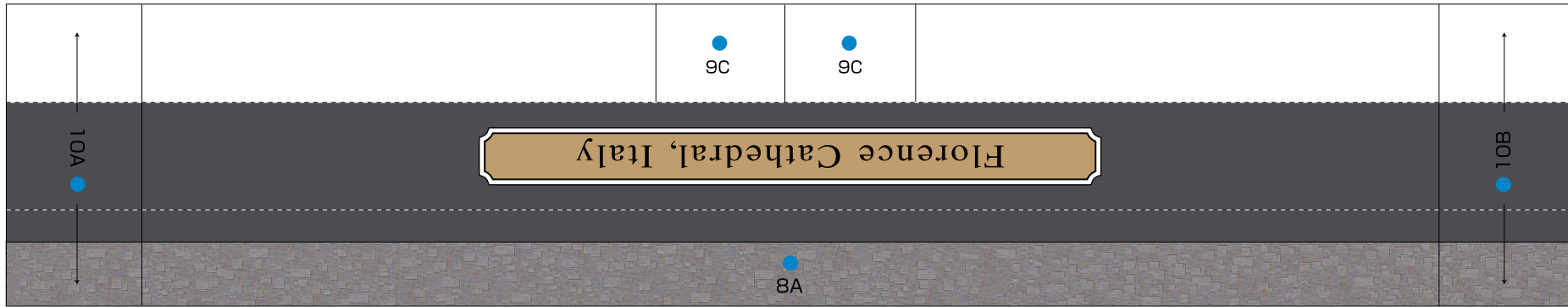


—— Scissors line    - - - - - Mountain fold    · · · · · Valley fold

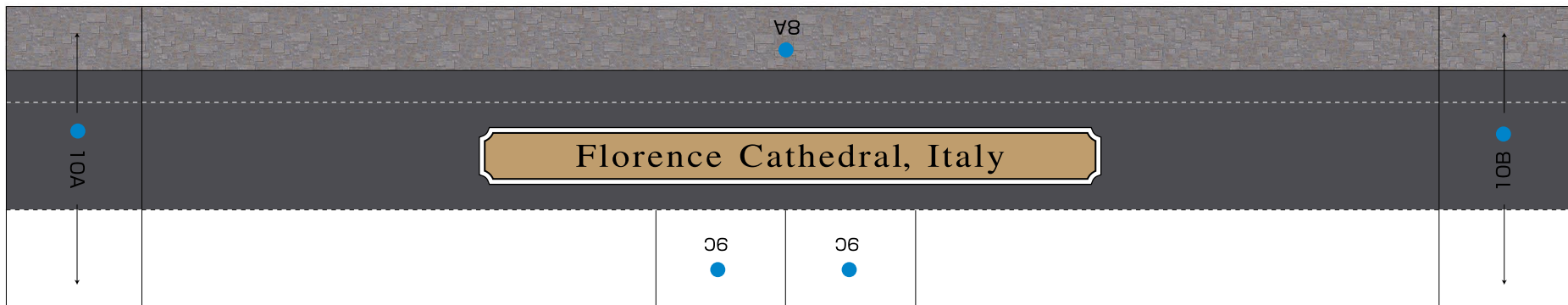


Sheet No.9

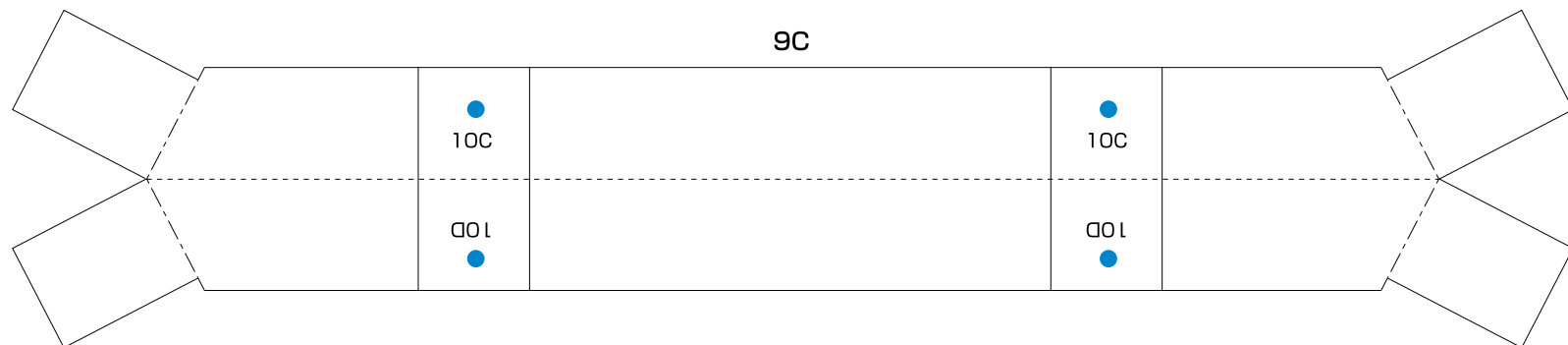
9A



9B

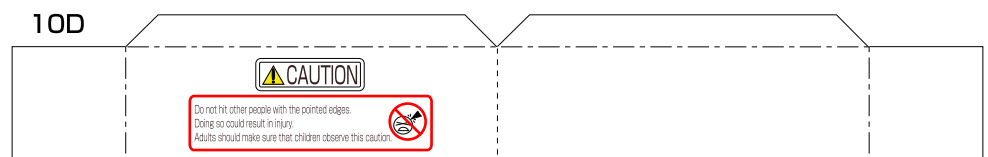
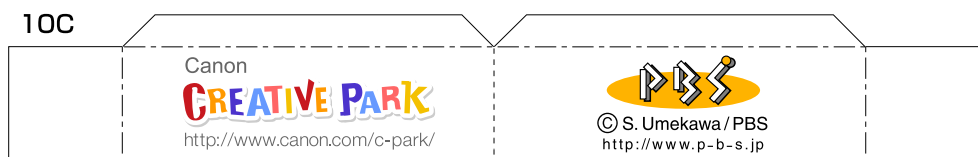
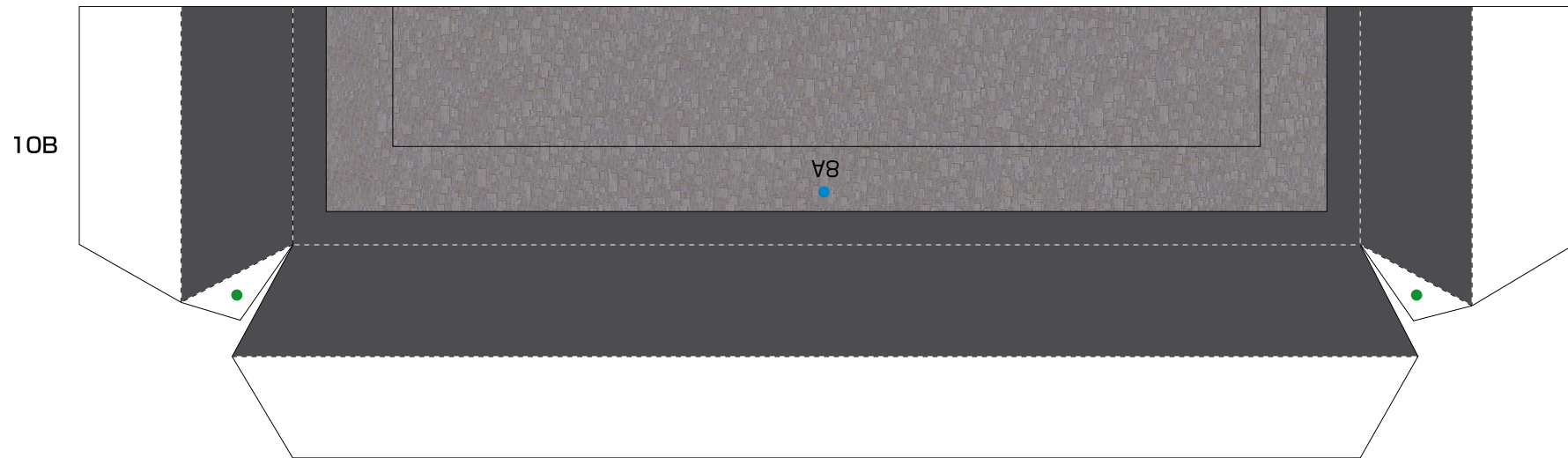
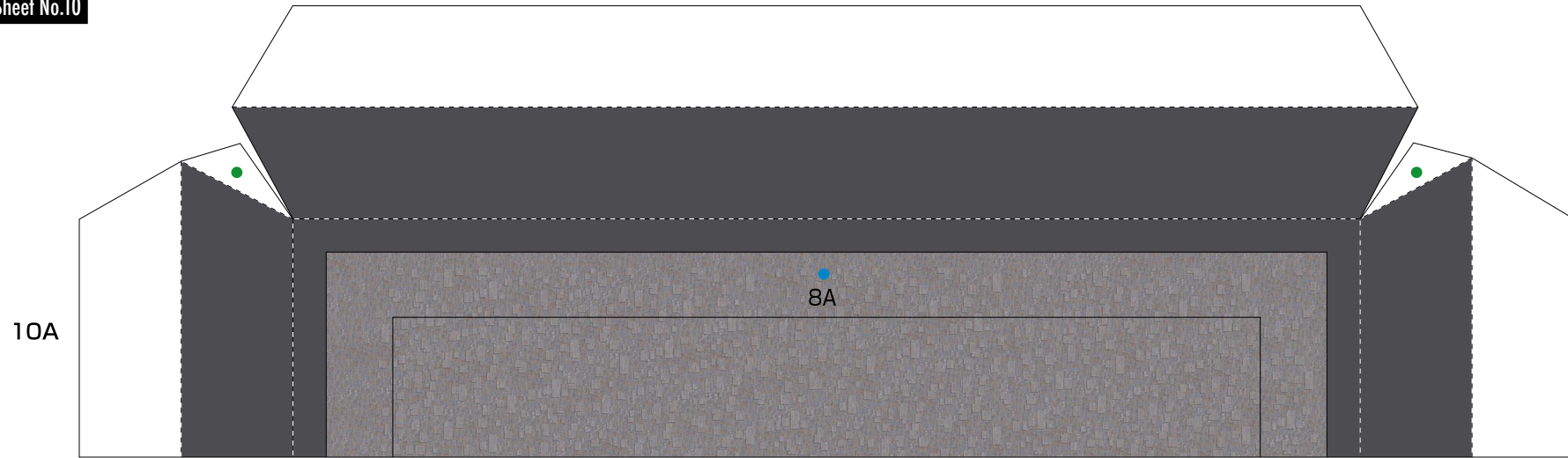


9C



—— Scissors line    - - - - - Mountain fold    - · - · - Valley fold

Sheet No.10



—— Scissors line    - - - - - Mountain fold    - · - · - Valley fold